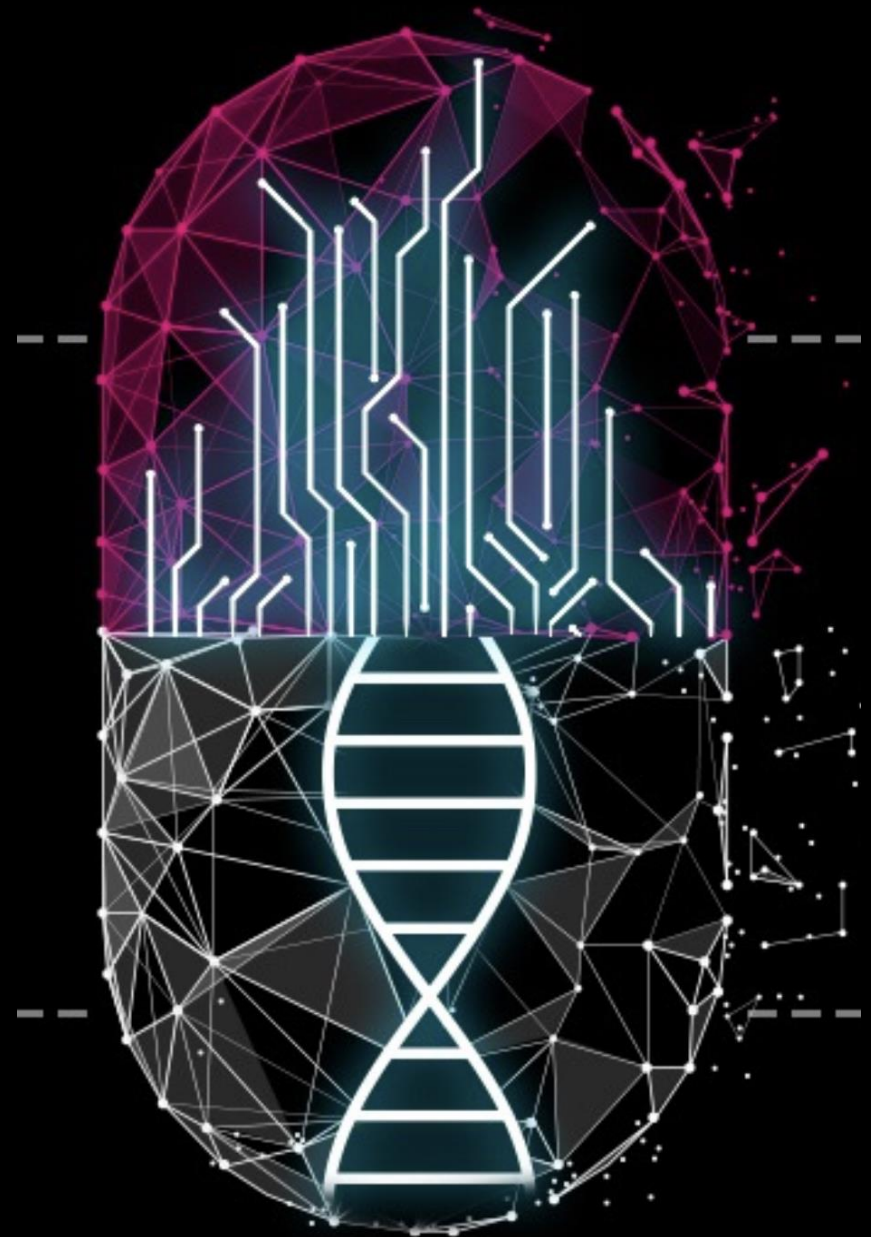




**GPS
MEDICAL
MEMORY
COURSE**



**COURSE
MEMORY
MEDICAL
GPS**





What the heck is G P S Medical Memory?

**What, you're not GPS trained yet
& you're almost ready to write your**

NBME&USMLE?





GPS

MEDICAL MEMORY COURSE

WELCOME



Oldie but Goody Pic

HELLOHHH . . . My Name Is . . .

DR. MICHEL
DC MD [PHD CANDIDATE 2025]
CEDIR FCCSC DAC CPT HMS

HelpMe@bettercalldoc.ca
WWW.BETTERCALLDOC.CA
LET'S START OUR WHATSAPP COMMUNITY

GPS Medical Memory

1-416-558-8601



What the heck is G P S Medical Memory?

**What, you're not GPS trained yet
& you're almost ready to write your
NBME&USMLE?**

G i o r d a n o P o w e r S y s t e m

It is an **evidence-based, visual thinking-based memorization** method using multiple systems of memorization involving encoding and selective instantaneous anamnesis (decoding).



GPS uses the same algorithm and programming system as **Artificial Intelligence**.

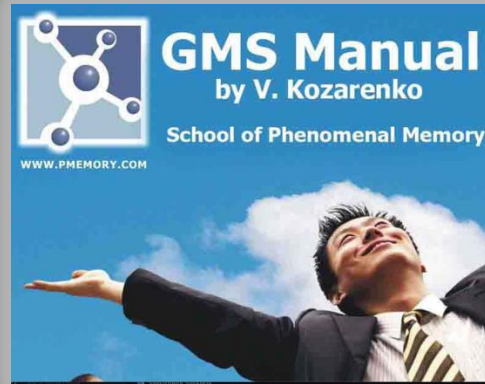




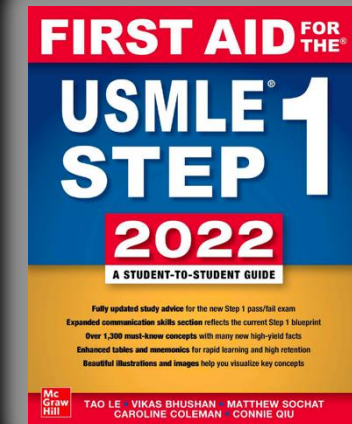
GPS MEDICAL MEMORY COURSE



THE ACADEMY
+
MD5 REVIEW PROGRAM



THE COURSE TEXTBOOK



THE MISSION



To Know or Not To Know That is the Question

No magic tricks to acquire memorization skills – it's not an easy process & the neuro-science behind the process is detailed & well explained ... clinical applications benefit. **All medical schools should start here!**



TOTAL RECALL



Not knowing the memorization systems taught in GPS makes it very difficult for students to achieve top marks on their USMLE exams. Taking on a tough exam such as the USMLE with ease & confidence is practically impossible without having expert memorization skills such as taught in the GPS program.



It's also the reason why, admittedly, **students forget more than 70%+ of materials** reviewed in First Aid within 3 months of writing the step exams. You need to retain your Step 1 knowledge for subsequent step exams, let alone as a practicing physician



GPS Memorization skills will empower students at the MD1 to 5 level, helping them **enjoy their learning experience, exam encounters and** become better clinicians in the process as they will permanently be able to recall their systems review knowledge.

IS THIS PHOTOGRAPHIC MEMORY?



The program is **NOT** the same as photographic memory, defined as the ability to recall every detail of an image or scene.

GPS Medical Memory requires effort and practice to encode and retrieve information, while photographic memory is supposedly effortless and innate.

There is **no conclusive evidence** that photographic memory even exists in humans, but **GPS is 100% evidence based**.



INTELLIGENCE VS
MEMORIZATION



LET'S GET THE FACTS
STRAIGHT ABOUT THE
DIFFERENCES
BETWEEN
**INTELLIGENCE VS
MEMORIZATION**

THE USMLE IS NOT JUST ABOUT UNDERSTANDING THE MATERIAL ... WE KNOW YOU GET IT

GPS IS ABOUT BEING ABLE TO MEMORIZE THE INFORMATION YOU ALREADY KNOW,

&

THEN BEING ABLE TO SELECTIVELY RECALL IT ON DEMAND [ANAMNESIS]

CONFIDENTLY, INSTANTLY & PERMANENTLY

**Pleasure
To Memorize
YOU**



Why all medical students need to use GPS Medical Memory for
QQQ

- ✓ MD 1 to 5 course content
- ✓ USMLE Step exams
- ✓ Clinical application in practice

Be able to memorize masses & masses & masses of
AAA

- ✓ Critically important
- ✓ Very difficult to retain long-term
- ✓ Detailed and precise information

Effortlessly and with added pleasure during the process.

- Data such as 1,600 drugs in their organized drug classes, their indications and all other features you need to know for the step and beyond.
- All lab values, instantly recalled as fast as a knee jerk response
- Individualized side effects, indications, dosages (Step 2)
- Everything in the First Aid review book is fair game!

ACADEMIC COURSES
MD1 to 5 Understanding · Knowledge

Anamnesis Skills, Training, Techniques, Coding
MEMORY

Question Training & Experience
EXAM TAKING



Predictors of USMLE Step 1 Outcomes: Charting Successful Study Habits

[Ryan W.R. Guilbault](#),¹ [Sang W. Lee](#),² [Brad Lian](#),³ and [Jaehwa Choi](#)⁰⁰⁴

▶ [Author information](#) ▶ [Copyright and License information](#) [Disclaimer](#)

Abstract

[Go to:](#) ▶

Background

The United States Medical Licensing Examination Step 1 is a test that affects many aspects of medical students' careers. The aim of this study was to assess the predictive value of various studying habits and academic traits.

Activity

A survey concerning Step 1 study habits and scores was collected and analyzed.

Results and Discussion

Study results showed that preclinical curriculum grades, practice test scores, and the number of practice questions completed were positively correlated with Step 1 scores. The strongest predictor of Step 1 scores was preclinical curriculum grades: each unit increase in a letter grade was associated with a 12-point increase in Step 1 scores.

Keywords: USMLE Step 1, Preclinical curriculum grades, Commercial question bank, Study time duration





MEDICAL BOTS



GPS is a USMLE-Specific Medical Memory program
What does that mean?

- **Innovative and specialized** to say the least. The only one in the world. Memory systems adapted specifically for medical content!
- USMLE medical content – **specific coding of all basic science** information.
- Memorization is specifically **formatted for instant recall for Q-Bank questions.**



On Your Mark . Get Set . Go



You will be able to review the entire
First Aid in 67 minutes

after you complete applying the
GPS Med Memory program



W w w . B e t t e r C a l l D o c . C a

GPS Medical Memory Courses

WHAT'S AN EASY-PASS
TO THE USMLE
WORTH TO YOU?

A TOP SCORING PASS RATE
IS PRICELESS, RIGHT?

1 MEMORY PLAN

WHAT'S TO COME
NOT AVAILABLE JUST YET
MODULE 1 & 2 ASYNCHONOUS ONLINE VIDEO SERIES

2 MEMORY PLAN

MODULE 1 & 2 A ZOOM SYNCHRONOUS + 1ST AID WORKSHOP AS YOU
MOVE ALONG WITH REVIEW COURSE AT JACKSON PARK HOSPITAL

3 MEMORY PLAN

WHAT'S TO COME
NOT AVAILABLE JUST YET
MODULE 1 & 2 & 3
MONDAY TO FRIDAY . 1ST AID EVERY PAGE IS COVERED.





W w w . B e t t e r C a l l D o c . C a

GPS Medical Memory Courses

WHAT'S AN EASY-PASS
TO THE USMLE
WORTH TO YOU?
A TOP SCORING PASS RATE
IS PRICELESS, RIGHT?

1

MEMORY PLAN

WHAT'S TO COME
NOT AVAILABLE JUST YET
MODULE 1 & 2 ASYNCHONOUS ONLINE VIDEO SERIES



2

MEMORY PLAN

THEORY LECTURES
MEMORY WORKSHOPS &
1ST AID MEMORIZATION WORKSHOPS USING ZOOM SYNCHRONOUS LIVE MEETINGS FROM
JACKSON PARK HOSPITAL'S EDUCATION DEPARTMENT.

3X/WEEK. 2 HOURS AT A TIME. 3 MONTHS TOTAL.

3

MEMORY PLAN

WHAT'S TO COME
NOT AVAILABLE JUST YET
MODULE 1 & 2 & 3
MONDAY TO FRIDAY . 1ST AID EVERY PAGE IS COVERED.



W w w . B e t t e r C a l l D o c . C a

GPS Medical Memory Courses

WHAT'S AN EASY-PASS
TO THE USMLE
WORTH TO YOU?
A TOP SCORING PASS RATE
IS PRICELESS, RIGHT?

1
MEMORY PLAN

2
MEMORY PLAN

\$170 x 4

Special Intro Price
Reg. \$1,200 USD

SPECIAL PREMIER LAUNCH PRICE

4x\$170/month USD

\$550 USD reg. \$1,200 USD

- Any student from MD1 to 5 can take the course now.
- Price will be \$1,200 USD January 2025.

3
MEMORY PLAN





Robo-Me



SUMMING UP THE GPS Medical Memory

A.I. evidence-based memory encoding and decoding (retrieval) system for:

1. Numbers ✓
2. Sequenced numbers ✓
3. Drug names, classes, SFX, indications ++ ✓
4. All diseases classified perfectly with all their details neatly grouped into your organized tidy perfectly indexed temporal lobe's hippocampus.
5. All classes of drugs permanently grouped in your memory ready for instant recall



SUMMING UP THE GPS Medical Memory

Memorize with ease in six seconds or less per data to be memorized

6. All viruses class types in the right order (dsDNA, ssDNA, dsRNA, ssRNA env. non env.)
7. All bacteria gm+/-ve with details in the right order
8. Detailed facts on all diseases that can be instantly recalled in any order.
9. Lab values? They will be a snap to memorize.
10. And pretty much anything else you need to memorize...numbers, facts, data, dates, drug names, ordered drug classes, SFX, receptor types with specific effects...bring it on!



222. RIGHT?

Once coded, it will take you approximately 20 minutes to memorize it – and then less than 1 minute to review – after 4 reviews it will be a part of your permanent memory.



224 SECTION II PATHOLOGY ▶ PATHOLOGY—NEOPLASIA

Oncogenes		
Gain of function mutation converts proto-oncogene (normal gene) to oncogene → ↑ cancer risk. Requires damage to only one allele of a proto-oncogene.		
GENE	GENE PRODUCT	ASSOCIATED NEOPLASM
ALK	Receptor tyrosine Kinase	Lung Adenocarcinoma (Adenocarcinoma of the Lung Kinase)
BCR-ABL	Non-receptor tyrosine kinase	CML, ALL
BCL-2	Antiapoptotic molecule (inhibits apoptosis)	Follicular and diffuse large B Cell Lymphomas
BRAF	Serine/threonine kinase	Melanoma, non-Hodgkin lymphoma, papillary thyroid carcinoma, hairy cell leukemia
c-KIT	CytoKine receptor	Gastrointestinal stromal tumor (GIST)
c-MYC	Transcription factor	Burkitt lymphoma
HER2/neu (c-erbB2)	Receptor tyrosine kinase	Breast and gastric carcinomas
JAK2	Tyrosine kinase	Chronic myeloproliferative disorders
KRAS	GTPase	Colon cancer, lung cancer, pancreatic cancer
MYCL1	Transcription factor	Lung tumor
N-myc (MYCN)	Transcription factor	Neuroblastoma
RET	Receptor tyrosine kinase	MEN 2A and 2B, papillary thyroid carcinoma, pheochromocytoma

Tumor suppressor genes		
Loss of function → ↓ cancer risk; both (two) alleles of a tumor suppressor gene must be lost for expression of disease.		
GENE	GENE PRODUCT	ASSOCIATED CONDITION
APC	Negative regulator of β-catenin/WNT pathway	Colorectal cancer (associated with FAP)
BRCA1/BRCA2	BRCA1/BRCA2 proteins	Breast, ovarian, and pancreatic cancers
CDKN2A	p16, blocks G ₁ → S phase	Melanoma, pancreatic cancer
DCC	DCC—Deleted in Colon Cancer	Colon cancer
SMAD4 (DPC4)	DPC—Deleted in Pancreatic Cancer	Pancreatic cancer
MEN1	Menin	Multiple Endocrine Neoplasia type 1
NF1	Neurofibromin (Ras GTPase activating protein)	Neurofibromatosis type 1
NF2	Merlin (schwannomin) protein	Neurofibromatosis type 2
PTEN	Negative regulator of PI3k/AKT pathway	Prostate, breast, and Endometrial cancers
Rb	Inhibits E2F; blocks G ₁ → S phase	Retinoblastoma, osteosarcoma (bone cancer)
TP53	p53, activates p21, blocks G ₁ → S phase	Most human cancers, Li-Fraumeni syndrome (multiple malignancies at early age, aka, SBLA cancer syndrome: Sarcoma, Breast, Leukemia, Adrenal gland)
TSC1	Hamartin protein	Tuberous sclerosis
TSC2	Tuberin protein	Tuberous sclerosis
VHL	Inhibits hypoxia-inducible factor 1α	von Hippel-Lindau disease
WT1	Urogenital development transcription factor	Wilms tumor (nephroblastoma)

[C] GPS PREP

SAMPLE OF A HORROR STUDY STORY

Ref. Page 224 First Aid 2023.

- There are over 260 individual elements to memorize
- All elements must be linked together into specific groups of 3 to 8 elements together
- Now, let's also add individual elements that must be connected, not individually but together & specifically. Ex. Letters A + L + K must be remembered together, in that order. And then, these letters must be associated with individual cancer names and features – specific to AKHL (just a nightmare example).

GOT QUESTIONS?

**HELP
ME...
PLEASE**

Send email for Q's and to Register:

www.bettercalldoc.ca

HelpMe@BETTERCALLDOC.CA

What's app community: GPS Medical Memory

1-416-558-8601

